

Hollow Metal...Hollow Metal...Hollow Metal

CHECK OUT OUR NEW STOCKING PRODUCTS!

OFFERS VALID FROM FEBRUARY 1, 2018 TO FEBRUARY 28, 2018!

SHANAHAN'S PRODUCTS

Shanahan's

INSTOCK

Call for Pricing!

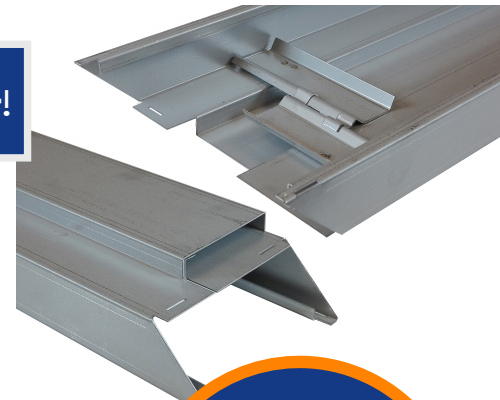
Expandable Jamb Depth Metal Frames!

18 Gauge Metal Expandable frames fire rated up to 90 minutes, available in Single & Double Openings.

Comes in 3' and 6' wide, 6'8" and 7' in height.

► **REGULAR** - 5 1/2" to 8 3/4" (Wall Thickness 4 1/2" to 7 3/4")

Other sizes available upon request.



**NOW
AVAILABLE!**

WHILE QUANTITIES LAST. OFFERS RUN FROM FEBRUARY 1, 2018 to FEBRUARY 28, 2018.

Shanahan's

Welded Frames
FW16 Series (Fully Welded)

IN STOCK!

WIDTH	HEIGHT(S)	JAMB DEPTH(S)
900*	2150*	150*, 210*
1800*		
3'0"	6'8", 7'0"	5 3/4", 5 15/16", 7 3/4", 8 1/4"
6'0"		

* Please contact your local branch for availability.



Shanahan's

**LS18 Gauge Hollow
Metal Doors**

Available in 3' and 6' wide; 6'8" and 7' in height.

IN STOCK!

WIDTH	HEIGHT	CORE	I61	I61/ I61	ASA/ FB	RP	VRP	86ED
900*	2150*	Honeycomb	●	●	●	●	●	●
		Polystyrene	●			●	●	
3'0"	6'8"	Honeycomb	●	●	●	●	●	●
		Polystyrene	●			●	●	
3'0"	7'0"	Honeycomb	●	●	●	●	●	●
		Polystyrene	●	●	●	●	●	●

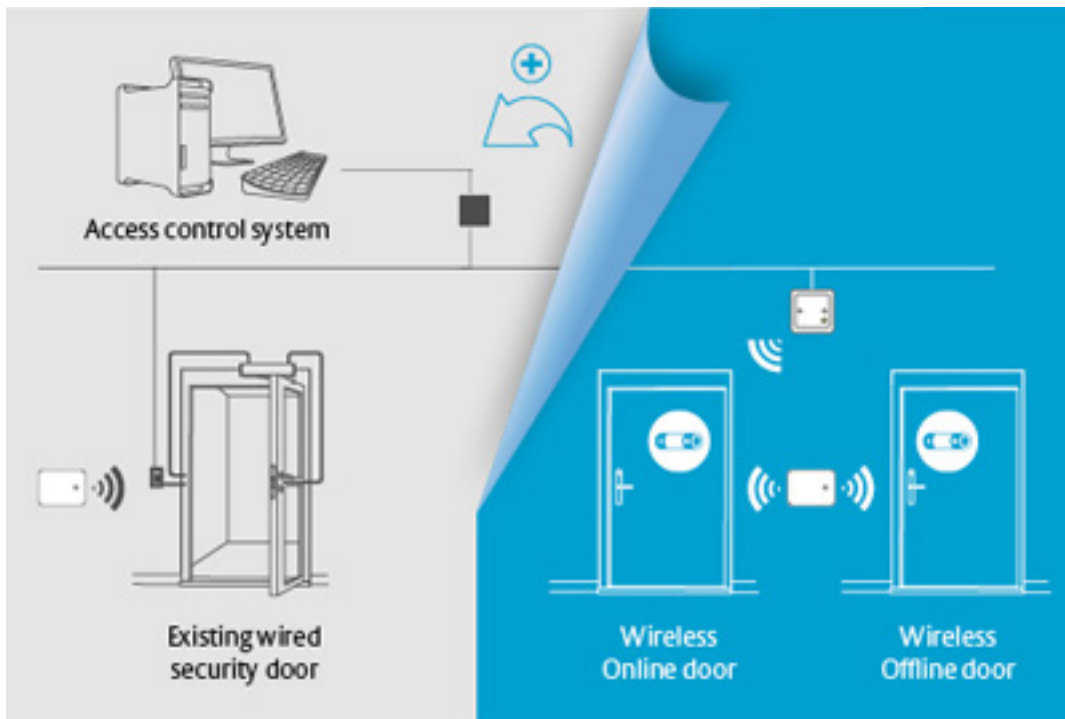
* Please contact your local branch for availability.

Aperio - Wireless possibilities for online door control!

Aperio® is the smart technology that enables mechanical locks to be wirelessly linked to a new or existing access control system. The new technology provides end-users with a simple, intelligent way to upgrade the controllability and security level of their premises.

Expanding your system by adding Aperio technology on additional doors increases the total security level of the premises. It is easy to install and enhances both the management and surveillance of the complete system. It also provides an intermediate level of security between wired doors and mechanical cylinders.

It easily integrates with most units and systems, regardless of the manufacturer, as it was developed around an open standard.



NOW
AVAILABLE!

WASHROOM ACCESSORIES



Hygienic Solutions
878 STAINLESS STEEL
BIOMEDICAL SHARPS
DISPOSAL
 Surface-Mounted

BOB-KB200-00



Now Available!



Washroom Accessories
BABY CHANGING STATION
 Horizontal, Wall-Mounted

BOB-KB200-00



Call for Pricing!



Washroom Accessories
CHANNEL-FRAME
 XX = Width;YY = Height
 Varies by branch location.

BOB-165-XXYY



Call for Pricing!



Washroom Accessories
SOAP DISPENSER
 Surface-Mounted

BOB-2111



Call for Pricing!



Washroom Accessories
SOAP DISPENSER
 Surface-Mounted

BOB-2112



Call for Pricing!



Washroom Accessories
SANITARY NAPKIN DISPOSAL
 Surface-Mounted

BOB-270



Call for Pricing!



Washroom Accessories
TOILET TISSUE DISPENSER
 Two Rolls

BOB-2740



Call for Pricing!



Washroom Accessories
STRAIGHT GRAB BAR
 1-1/2" Diameter

BOB-6806



Call for Pricing!

THE RIGHT PRICE FOR YOU
CALL IN FOR MORE INFO

Shanahan's

Visit **Shanahan's** and
McGregor & Thompson
at booth #724 inside...

BUILDEX
VANCOUVER
FEBRUARY 14 & 15, 2018
VANCOUVER CONVENTION CENTRE WEST

BUILDEX Vancouver is Western Canada's largest tradeshow and conference for the Construction, Renovation, Architecture, Interior Design and Property Management industries.

Contact your local Shanahan's branch for more information on pricing and stocked skus!

For information and pricing on any products featured in this month's flyer, please contact our office and our customer service team will gladly assist you!

**PLEASE NOTE: Any returns on products sold with promotional pricing and/or promotional incentives/giveaways are subject to review*

BRITISH COLUMBIA

Surrey
13139-80th Avenue
Surrey, BC V3W 3B1
Ph: (604) 591-5111
Toll Free: (888) 591-5999
Fax: (604) 591-3171
Toll Free Fax: (888) 591-5511

Victoria
466 Bay Street
Victoria, BC V8T 5H2
Ph: (250) 383-8666
Toll Free: (877) 283-8666
Fax: (250) 383-8654

Kelowna
221 Adams Road
Kelowna, BC V1X 7R1
Ph: (250) 765-5255
Toll Free: (877) 683-0555
Fax: (250) 765-5259

ALBERTA

Edmonton
17439 129 Avenue
Edmonton, AB T5V 0C1
Ph: (780) 489-5444
Toll Free: (800) 874-5786
Fax: (780) 486-0224

Lethbridge
1430 - 31st Street North
Lethbridge, AB T1H 5J8
Ph: (403) 327-3282
Toll Free: (800) 798-4864
Fax: (403) 327-0111

Calgary
BAY 12 - 2731 57th Avenue S.E.
Calgary, AB T2C 0B2
Ph: (403) 279-2782
Toll Free: (888) 279-2983
Fax: (403) 279-3972

SASKATCHEWAN

Regina
225 Quebec Street
Regina, SK S4R 8S2
Ph: (306) 359-7385
Toll Free: (800) 491-4191
Fax: (306) 525-9168

Saskatoon
509 44th Street East
Saskatoon, SK S7K 0V9
Ph: (306) 242-4248
Toll Free: (800) 665-5000
Fax: (308) 242-9282

MANITOBA

Winnipeg
Unit E1 - 1725 Inkster Blvd
Winnipeg, MB R2X 1R3
Ph: (204) 694-3301
Toll Free: (800) 667-3301
Fax: (204) 694-1691

Visit us online

www.shanahans.com